



*Building the **Europe** of  
Knowledge*

# **Greece** participation's in the European Strategy Forum for Research Infrastructures (ESFRI)

**Athens, 21 March 2007**

❖ **Dr. Christos VASILAKOS**  
**COUNSELLOR for RESEARCH & TECHNOLOGY**  
**PERMANENT REPRESENTATION of GREECE**  
**to the EU**



# Overview

■ **European Strategy Forum for Research Infrastructures (ESFRI) was set up by the Member States in 2002, following a recommendation of the EU Council. Its main scope is:**

- ❖ Support a coherent and strategy led approach to policy making on research infrastructures in Europe
- ❖ to facilitate multilateral initiatives leading to the better use and development of research infrastructures.

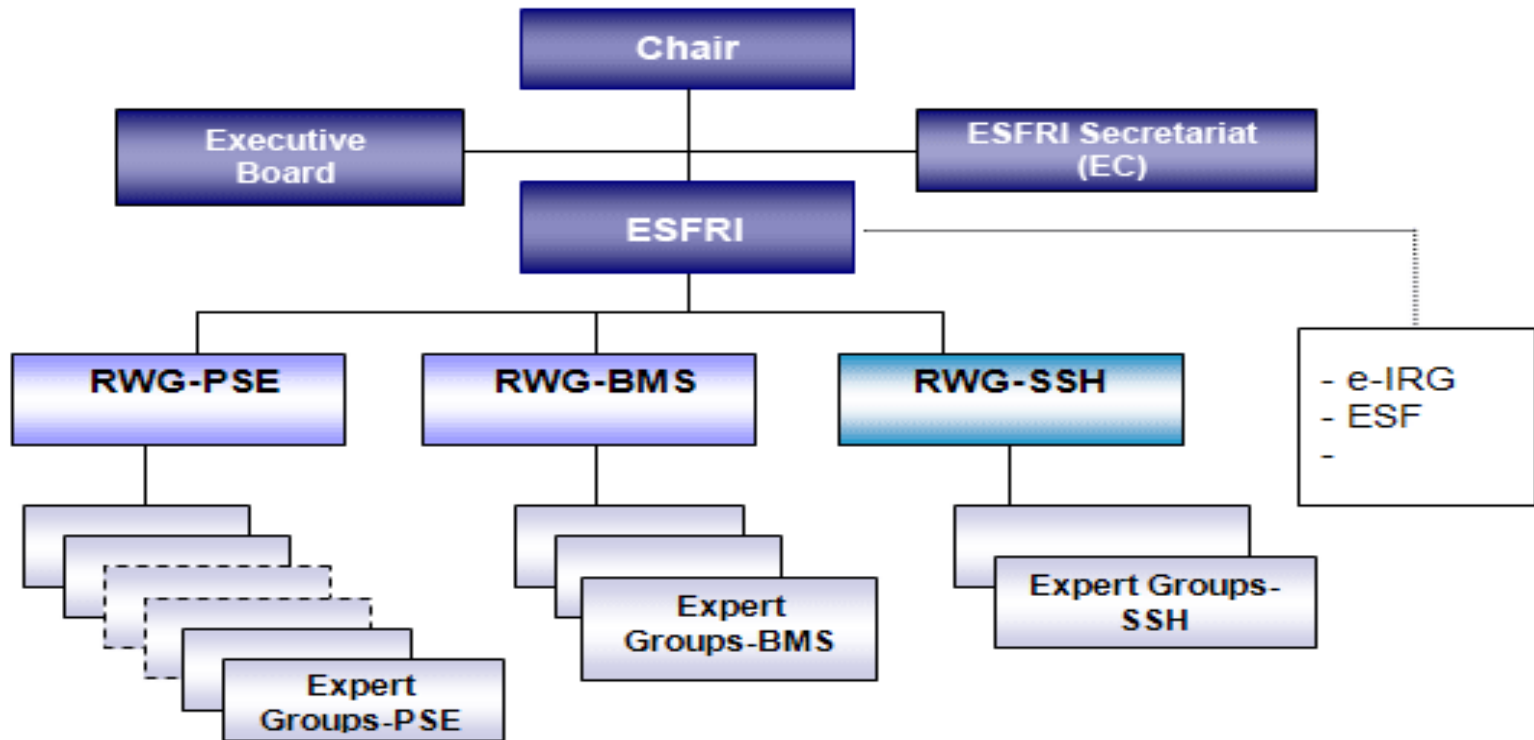
**(27 Member States + 6 Associated States)**

**Informal Competitiveness Council (July 2004) and Competitiveness Council (November 2004)** stressed the Commission's proposal to develop a strategic roadmap for Europe in the field of research infrastructures for the next 10-20 years. In this context, the ESFRI could play a role of increasing importance.

**The objective of the ESFRI Roadmap will be to provide an overview of the needs for research infrastructures of pan-European interest.**



# ESFRI Operational Structure



## Greece participation's in the operational structure

- Two (2) ESFRI delegates
- Three (3) delegates to the RWGs
- Nine (9) delegates to the Expert Groups (~9%)



# The strategic procedure

- ❑ The preparation of the ESFRI roadmap was the main activity of the Forum during the period 2005-6 supported by three Roadmap Working Groups. Also, a number of external scientific experts from all fields of science and technology were involved and consulted in the process of preparing the roadmap
- ❑ As stated by the **Council** of July 2006, the Community Framework Programme will aim at supporting the *"construction of new research infrastructures or major upgrades of existing ones focussing mainly on preparatory phases, to promote the emergence of new research facilities, in accordance with the principle of 'variable geometries', building primarily upon the work conducted by ESFRI"*.
- 2005-2006 the discussions at Council and European Parliament level highlighted the important role of ESFRI as a basis for the implementation of FP7.

**September of 2006: ESFRI agreed on its report**



# A Clear Vision for Greece

## Based on:

- ❖ the role that **GREECE** should play in the European Research Area
- ❖ the effort to stimulate the national scientific approach to research infrastructures (RIs) and the synergies with the other activities at EU level
- ❖ the need to boost the Research and Innovation to the **Greek Research Area**
- ❖ the political decision to support both the European and National efforts towards the Lisbon goals (3% R&D of GDP)

***GREECE launched an initiative to develop the First Roadmap for Large Scale Research Infrastructures (GR-LSRI) for a long term period***

**March of 2007: Greek National Roadmap for LSRI**



# An Active Greek's role

- **Political Commitments** for support the European Roadmap
- Candidate country to host the **KM3NET** (Cubic Kilometre Neutrino Telescope) in Pylos
- **Greek participations in European Roadmap for RIs:**
  - ❖ **ELI** (Extreme Light Infrastructure)
  - ❖ **FAIR** (Facility for Antiproton and Ion Research)
  - ❖ **XFEL** (X-ray Free Electron Laser)
  - ❖ **PRINS** (Paneuropean Research Infrastructures for Nano-Structures)
  - ❖ **INFRAFRONTIER** (Infrastructure for Phenomefrontier and Archivefrontier)
  - ❖ **EROHS** (European Resource Observatory for the Humanities and Social sciences)

*.....other possible participations are to be identified*



## **Greece will strongly supports the draft Council Conclusions on Research Infrastructures (April & May of 2007)**

- **ACKNOWLEDGES** the excellent work of the European Strategy Forum on Research Infrastructures (ESFRI) in developing an initial European Roadmap for new and significantly updated large-scale RIs
- **INVITES** the Member States to develop or strengthen their national roadmaps and strategies on RIs, to develop a long-term budgetary plans for the investments and to coordinate their future activities among themselves, on the base of the orientation proposed by ESFRI
- **NOTES** the potential of financial instruments such as the-Risk Sharing Finance Facility (RSFF) and the Structural Funds for complementing the regional, national or European funds already identified for the implementation of projects in the field of RIs
- **STRESSES** the need for a continued focus of these activities throughout the duration of FP 7
- **INVITES** the Commission and Member States to explore the potential for international co-operation with the main global players in appropriate fora



**THANK YOU FOR  
YOUR ATTENTION**

**Dr. Christos VASILAKOS**

*Counsellor for Research & Technology*

**c.vasilakos@rp-grece.be**