

*WIRE: Week of Innovative Regions in Europe
Granada, 15th-17th March 2010*

RESEARCH POTENTIAL **Objectives & Results**



*Dr. Marita KAYAMANIDOU
European Commission, DG Research
Programme Manager 'Research Potential'*

**Presidencia
Española
de la Unión
Europea**

eu 2010.es





RESEARCH POTENTIAL

A New FP Activity

According to the **Lisbon Strategy**, Europe should become the most **competitive** and dynamic **knowledge-based** economy in the world

To this end, the EU decided in 2000 to strengthen **Research** and **Innovation** by creating **ERA** to link the **best** European RTD institutions

RESEARCH POTENTIAL was created (**FP7**) to reinforce excellent research institutions located in **Convergence** and **Outermost** regions in order to permit their **emergence** in **ERA**

This will expand ERA to the **entire European territory** and also **boost-up** the development of these regions with the production of new knowledge & technological processes, contributing to an increase of productivity, employment and growth



RESEARCH POTENTIAL

Objectives

- Stimulate the realisation of the **full Research Potential** of the ERA by integrating **excellent** research entities of **significant size** established in the **EU's Convergence & Outermost Regions**
- **Contribute** to the regional & European **sustainable socio-economic development**

RESEARCH POTENTIAL Objectives

For the Research entities

- Upgrading of *RTD capacity* (HR, S&T equipment, research management)
- Increase of their *S&T excellence* and visibility
- Integration in *European Research Networks & in ERA*
- Improvement of their *participation in FP7 projects*

For the EU Regions

- Contribution to the regional *sustainable socio-economic development* and (mid-term) *jobs creation*

RESEARCH POTENTIAL

Expected impact

For the Research entities

- Upgrading of ***RTD capacity*** (HR, S&T equipment, research management)
- Increase of their ***S&T excellence*** and visibility
- Integration in ***European Research Networks & in ERA***
- Improvement of their ***participation in FP7 projects***

For the EU Regions

- Contribution to the regional ***sustainable socio-economic development*** and (mid-term) ***jobs creation***

RESEARCH POTENTIAL

applicants established in the sole
CONVERGENCE & OUTERMOST
regions

partners:
EU Member States and
Associate Countries

**Presidencia
Española
de la Unión
Europea**

eu 2010.es

*WIRE: Week of Innovative Regions in Europe
Granada, 15th-17th March 2010*



CONVERGENCE REGIONS

eligible for financing by the Structural Funds (2007-2013) under objective « convergence » - whose per capita gross domestic product (GDP) is less than 75 % of the average GDP of the EU-25





✓ ***OUTERMOST REGIONS***

Regions defined by art. 299§2 of EC Treaty

- ✓ **Canary Islands (ES),**
- ✓ **Guadeloupe, Guyane, Martinique, Réunion, Saint-Barthélemy, Saint-Martin (FR),**
- ✓ **Azores & Madeira (PT)**

RESEARCH POTENTIAL

Single applicant

- Any existing and autonomous public or private *Research entity* established in the eligible regions
- *High quality* research entities of *significant scientific and organisational size*
- *Proposal must include three or more knowledgeable and experienced partner organisations in other EU Member States or Associated Countries*

RESEARCH POTENTIAL

Implementation

- *RegPot supports an **Action Plan** defined by the applicant, derived from its **SWOT** analysis, composed by a **coherent set of 4 measures**:*
 - *Exchange of know-how and experience (**secondments**)*
 - *Recruitment of experienced researchers*
 - *Upgrading or acquisition of research **equipment***
 - *Organisation of **workshops & conferences***
- *Optional **ex-post evaluation** for RTD sustainable strategy*

RESEARCH POTENTIAL

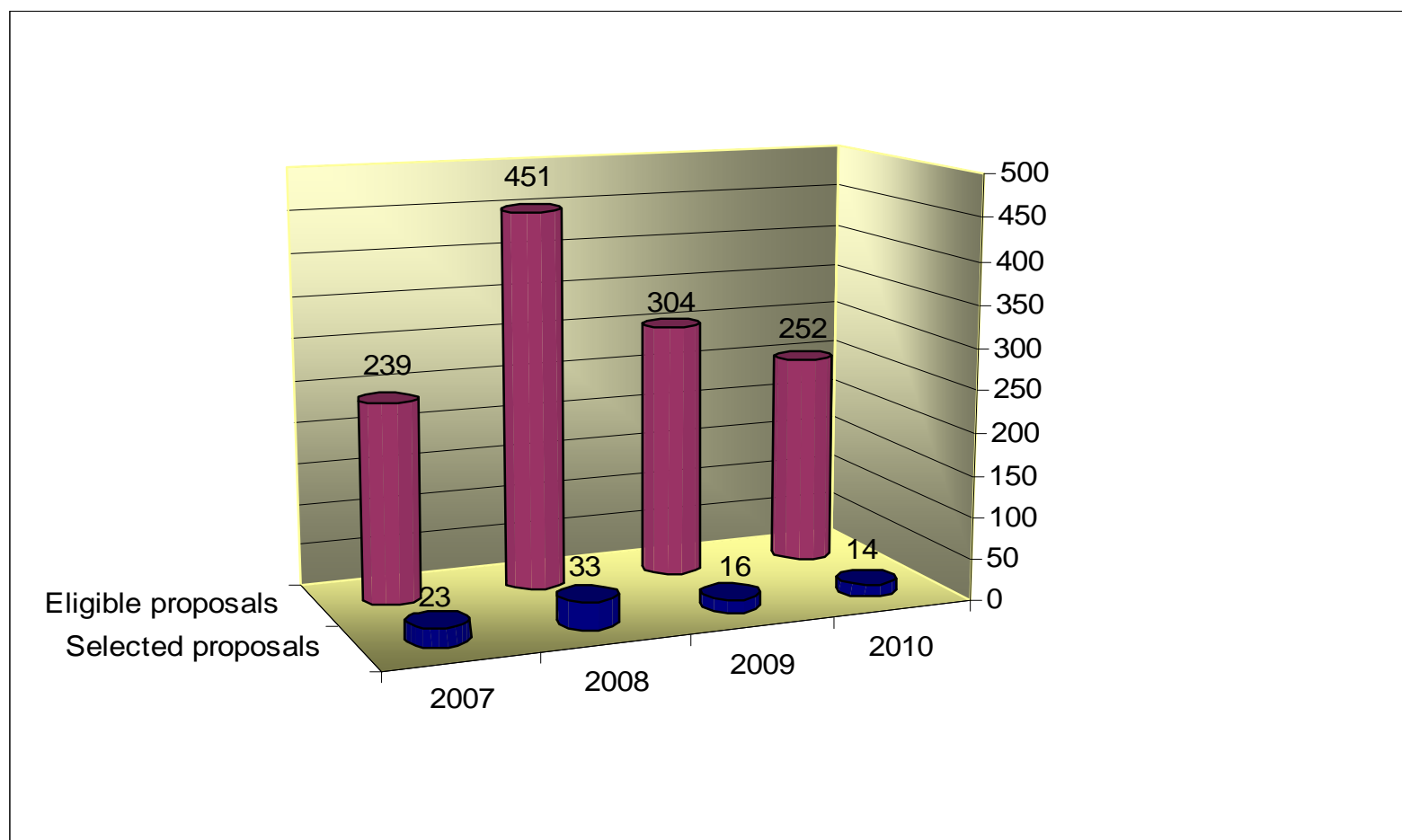
- **Budget** for 2007-2013 period: 340 M€
- **The EC financial contribution per selected project** can be **up to EUR 4 million** (as from 2009)
- **The EC financial contribution** may reach a max. of **100% of eligible costs** – Support Actions
- **Duration of projects:** **up to 36 months** (+ 6 additional months if ex-post evaluation facility is included)

Research Potential *Calls REGPOT-1*

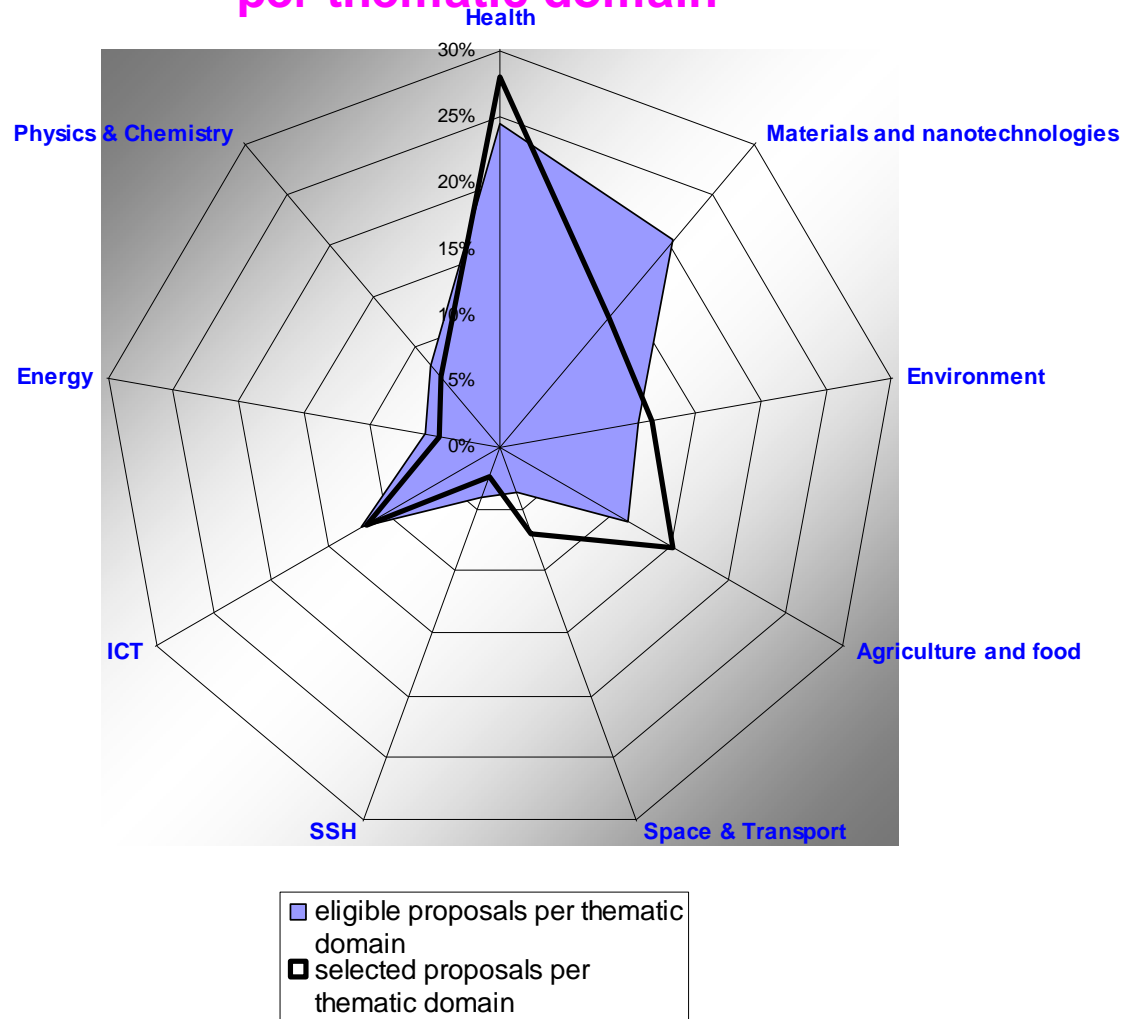
	2007	2008	2009	2010
Eligible proposals	239	451	304	252
Above threshold	34,7%	42,8%	44,4%	52,4%
Funded proposals	23	33	16	14
Average EC requested budget (M€)	1	1	2,1	2,2
EC requested contribution (M€)	228,8	487,6	696,4	548,4
EC contribution (M€)	23,5	31	30	31

Calls REGPOT-1

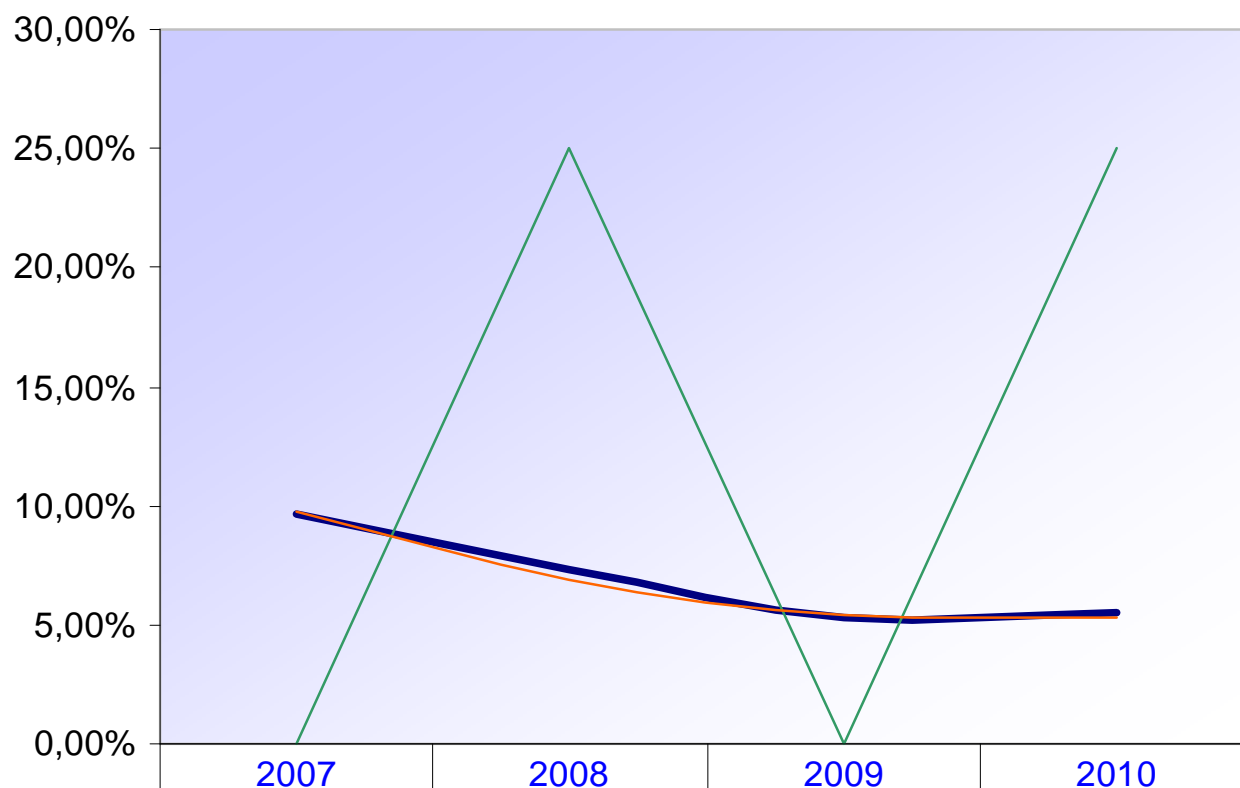
Eligible versus selected proposals



Calls REGPOT-1: Eligible and selected proposals per thematic domain



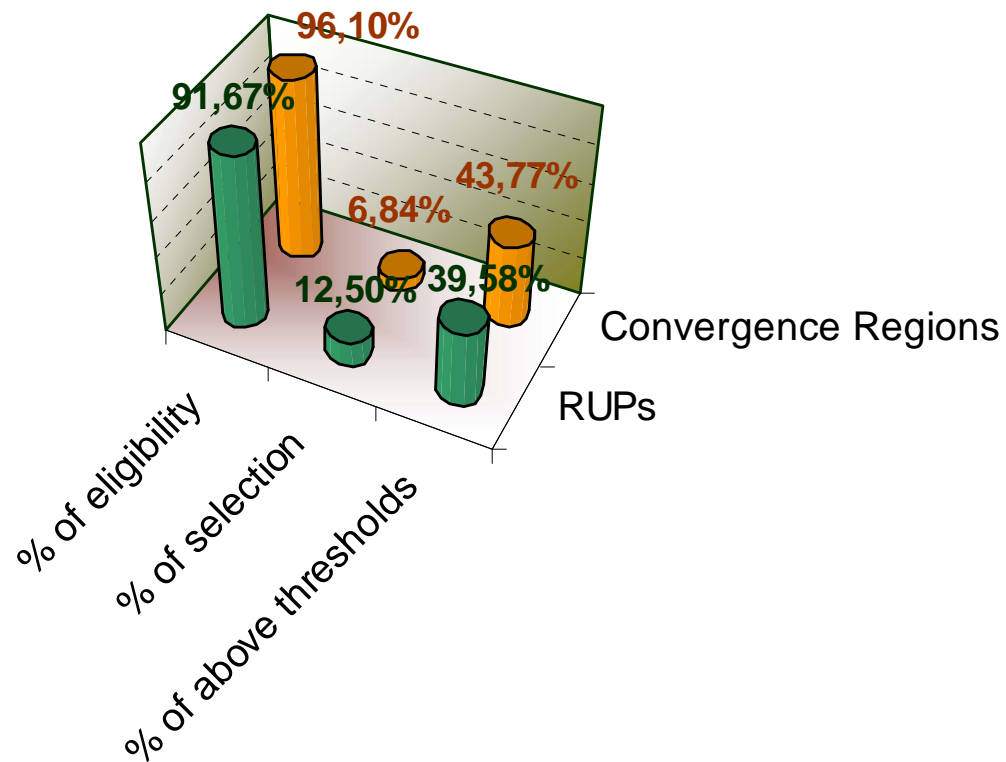
Calls REGPOT-1: Success rate evolution



— Core call	9,62%	7,32%	5,26%	5,56%
— RUPs	0,00%	25,00%	0,00%	25,00%
— Convergence Regions	9,79%	6,94%	5,37%	5,28%

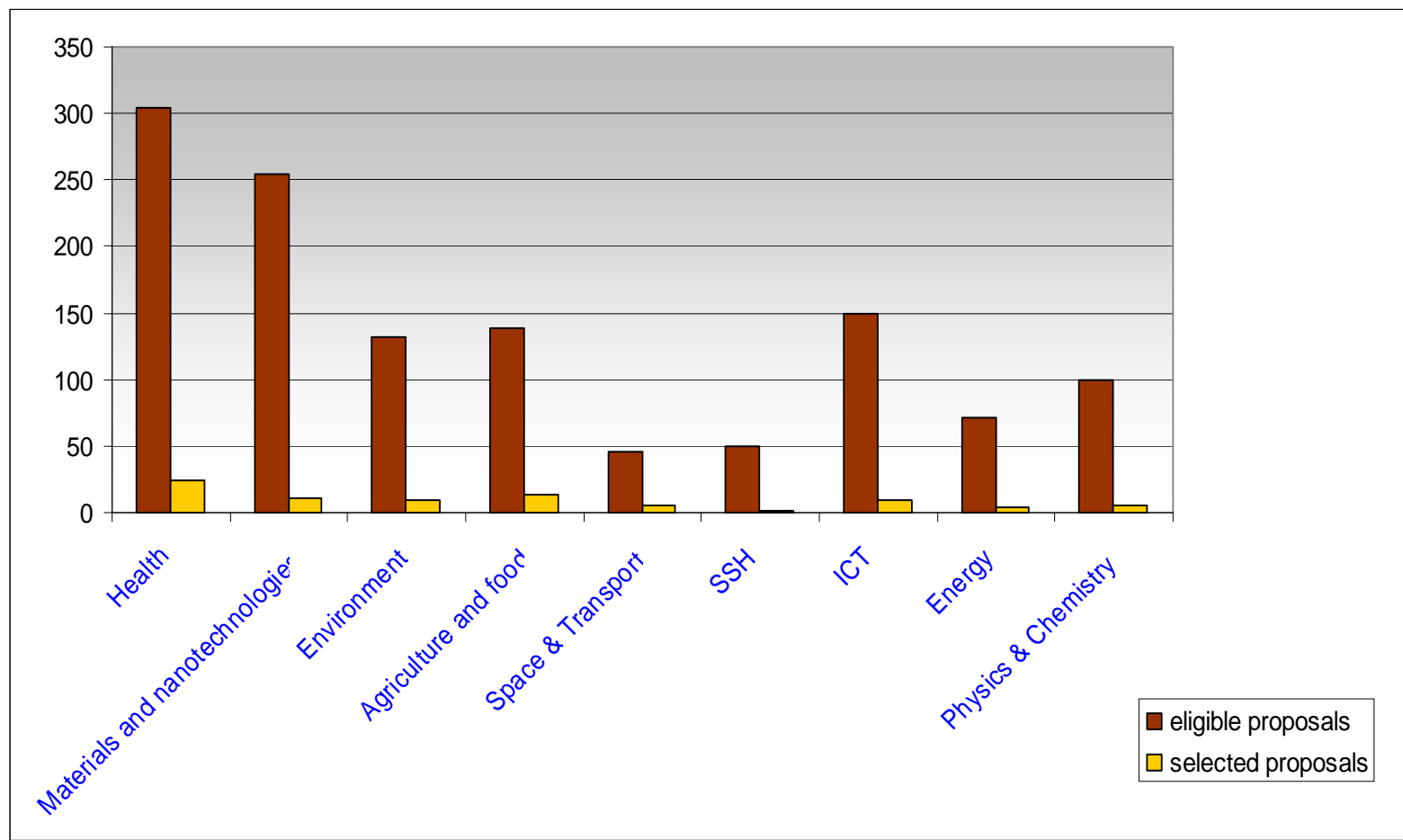


RUP versus CR



	% of eligibility	% of selection	% of above thresholds
■ RUPs	91,67%	12,50%	39,58%
■ Convergence Regions	96,10%	6,84%	43,77%

Eligible versus selected proposals per thematic domain



And also ...

- In 2007 and 2008 two calls provided **evaluation facilities** to eligible research entities (*2 M€; average project size: 150 000 €*)
- In 2007 and 2010 two calls targeting the **WBC RTD** entities and their Research Potential increase (*16 M€ EC contribution*)
- In 2009 one call targeting **EU-MPC** cooperation in the frame of RegPot (*8 M€ EC contribution*)

Lessons learnt (I)

- ✓ Simple and **well understood** activity (very low ineligibility rate, <1%)
- ✓ Constantly **high interest** to all RegPot calls (oversubscription to the main call)
- ✓ **Wide range** of scientific topics: all FP7 Thematic Domains represented
- ✓ Excellent **geographical** spread: all 20 “eligible countries” + 6 AC
- ✓ **Very high quality** of proposals: funded proposals scored 14 and above
- ✓ Average per (selected) project: **7 partnering organisations** of high competence from EU and AC

Lessons learnt (II)

- ✓ Applicants + partnering organisations: *all MS and AC* participate in proposals submitted to REGPOT
- ✓ Higher selection rate for *Outermost* than for Convergence Regions
- ✓ Successful *WBC* and *MPC* calls
- ✓ Constantly decreasing *selection rate*
- ✓ Demonstrated *synergy* with Regional Policy (in proposals above thresholds)

Some concerns

- ✓ *Budget* demand more than *20 times higher* than the available budget
- ✓ *5% selection rate* for 2009 and 2010
- ✓ Too many *excellent proposals* annually rejected because of budgetary constrains

Conclusion

*The activity in its first stage (launch phase) demonstrated a great success but its major threat = **low budget**
This deserves immediate attention!*



Thank you for your attention!

**Presidencia
Española
de la Unión
Europea**

eu 2010.es

***WIRE: Week of Innovative Regions in Europe
Granada, 15th-17th March 2010***





WIRE: Week of Innovative Regions in Europe
Granada, 15th-17th March 2010

em 2010.es